

Design Trends in Modern Homes: Doors and Ironmongery



How are trends in modern living and interior design affecting the specification of doors and ironmongery?





Will your doors and ironmongery meet the needs of buyers in 2022?

Why doors and ironmongery should be considered at the design stage

Whilst the choice of wallcoverings, flooring, soft furnishings and lighting are well-utilised tools of the designer's box, doors and door furniture are often given less consideration and in some cases seen as a purely functional item that adds little value. This misses a huge opportunity to add value by positively impacting the end user's impression of the property's design and utilisation of space.

1. DOORS MAKE A GREAT FIRST IMPRESSION

The very first impression people have of a room is through the door. Your door sets the tone for the rest of the room, so if it's a poor quality or design, you could create the wrong vibe.

2. HIGH USER INTERACTION

Did you know home owners interact with their doors and handles more than any other fixture in a room? The look, performance and tactile touch of the door and handle will affect how users feel about their environment.

3. ADDS MORE VALUE FOR LESS £

If you're looking to add value to the property, quality doors and ironmongery last longer and give a better return than many other features such as expensive wall-coverings or flooring.



4. SIZE MATTERS!

Even an average door is nearly 2m high and at least 762mm wide, and a room might have two or three doors. That's a lot of surface area that can affect the look and feel of your interior!

5. COMPLEMENTS YOUR DESIGN

The design theme of your interior can be complemented and enhanced through doors and handles, with styles and finishes matching other features of the room.

6. SPACE UTILISATION

Doors significantly affect how space is utilised in your property, so if you're looking to maximise the functionality and versatility of your interior, doors cannot be overlooked.

■ Tip: Explore this guide for ideas to include in your early design...

How global events have changed the role of doors

The global pandemic has caused a seismic shift in the property needs and desires of home owners. Working from home has dramatically increased, so people spend more time in their dwellings and want to maximise space and have more of a liveable, comfortable environment.

The race for space

The need for space is not just confined to having a room for an office. People want additional space throughout the home, from living and dining areas for relaxing and entertaining, through to areas for keeping fit or utilising the garden more effectively.

The shift to working from home has encouraged home owners to either move to bigger, more spacious properties or renovate and reconfigure rooms to maximise the flexibility of the space they have.

Growth of multi-functional areas

The open plan layouts of the past decade are making way for the new era. Creative use of doors and partitions enable areas to be closed off or opened up when required throughout the day. Space where limited can be multi-functional depending on the commitments of the owner's lifestyle.

A move towards light

There is a greater need for natural light and colour to brighten interiors, and this is influencing people's choice of colours and finishes, with warmer natural tones becoming more popular. Door and ironmongery choices are reflected in this move towards more homely and liveable designs, including the use of glazing in doors to maximise natural light within the home.



Modern interior design trends in 2022

A LEADING DESIGNER'S VIEW:

“ *Modern home interiors today are opening doors for neo-traditional designs and aesthetics. This means a revival of classics inspired by the most contemporary trends and looks.*

Every wall, door, piece of furniture, colour and accent of a modern home showcases an organic yet individualistic style that is personal to its occupier. Bold patterns are blended in an understated glamorous set up. Shiny textures are the new nude colours.

Vintage designs have a new look and the uber-modern designs are rooted. Homes are not constructed anymore, they are curated, creativity is not compromised - and that is deeply satisfying for us as interior designers.

It's all about bringing together a mood, a vibe in homes that displays an eye for detail, effortless style, comfort and timelessness.

”



Neha Malhotra
Director

INTERIOR AESTHETE LIMITED
interioraesthete.com

INTERIOR AESTHETE
by Neha Malhotra

What types of modern doors are trending in 2022?

Sliding pocket doors



- Maximises available space with the flush door leaf opening into a pocket inside the wall cavity
- Optimum room functionality and architectural design flow

Door pairs and folding doors



- Used to partition or close off areas for privacy
- Multi-functional use of space depending on the time of day, from homeworking to entertainment

Room partitions and screens



- Allows natural light to penetrate interior spaces and brighten the home
- Retains an open plan layout for socialising whilst partitioning to align areas to different functions, such as cooking or relaxing

Feature doors



- Use feature doors to make a statement or accentuate your interior design theme
- Make a statement for an impressive entrance or to differentiate a special room

What are the trends in the designs of modern doors?

Modern doors are typically of a simple flush design without the raised panelling or mouldings associated with more traditional styles. However due to demand there is more choice of designs and finishes now available to property developers and home owners, with suppliers like Denleigh who provide a highly bespoke solution.

Door designs generally fit into two camps:

Discreet



Discreet doors that take a back seat and let other elements of the design breathe such as flooring, wallpaper, furnishings. Their design is more subtle and measured.

Feature



Feature doors that make an impact with a bold design, use of colour, choice of veneer, stain and use of striking handle designs and finishes.

Examples of feature doors

Different elements of feature doors are designed to stand out and attract attention, either to contrast or work with other fixtures and finishes in the room. Examples of custom features you can tailor to add effect include:

OVERSIZE



Ideal for making a grand entrance



[MOD-440 in Ebony with Teak and Brass Inlay](#)

MOULDINGS



Accentuate your doors style

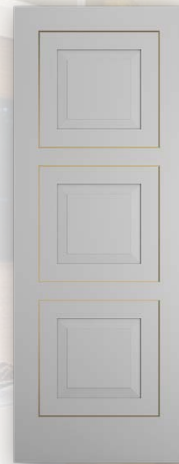


[MOD-430 Black Stained Oak with Brass Inlay](#)

VENEERS



Choose from 49 Denleigh veneers



[MOD-503 in White with Brass Inlay](#)

COLOUR



Denleigh will paint your door in any RAL colour



[MOD-432 in Grey Frassino with Black Inlay](#)

GLAZING



Glazed panels brighten and open up space



Add luxury with metal or timber inlays, or both!



[MOD-426 Green RAL6033 with Brass Inlay](#)

Examples of discreet doors

The features of discreet doors are applied subtly to complement their interior features, adding a sense of understated style and good taste that allow other fixtures and elements of the room to shine through and take centre stage. Customisable features of the door include:

FLUSH



Plain flush doors

COLOUR



Painted in white or a neutral colour

MOULDING



Flat panelled with discreet mouldings

VENEER



Veneer with one-directional grain

GROOVES



Inset grooves adding interest to an otherwise plain design



[MOD-256 in Angora Recon](#)



[MOD-412 in Oak](#)



[MOD-450 Recon Silk](#)



[MOD-256 in Oak](#)



[MOD-280 in Grey Coto](#)

Popular veneers and finishes for 2022

As warmer, more natural tones and textures increase in popularity, designers are likely to choose door designs and finishes that complement this style. Creative designs and materials make homes more vibrant, interesting, inspiring spaces to live with warm neutrals and textures displacing stark white decor and cosy things up.

Veneers

Natural veneers such as oak will remain popular in modern settings, however, other tones such as Grey Fressino, Ebony or Silk, are likely to be popular with home owners.



Grey Fressino



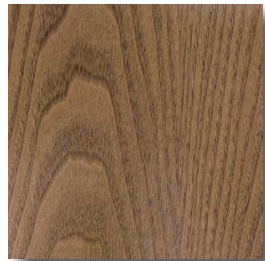
Silk



Recon Ashen



Ebony



Earth Stained Oak



Glassy Betulla

Doors with laminate finishes are becoming popular in certain shared use applications such as apartment corridors and communal areas. Durable laminate surfaces are strong and offer protection from door contact damage.



Differentiating doors for modern settings

Coloured doors

Painted finishes are great for creating a contemporary look and can be a cost-effective alternative to veneers. Options range from subtle greys and creams, right through to statement blues and greens. Denleigh can supply doors painted in any RAL colour.



Inlays

Metal or timber inlays are an excellent way of adding colour and luxury to your doors. Choosing an inlay in a finish that complements the fixtures elsewhere in the home will accentuate the hues of your contemporary design and ensure consistency. Supplementing this with handles and ironmongery in a similar finish completes the job.



Grains and patterns

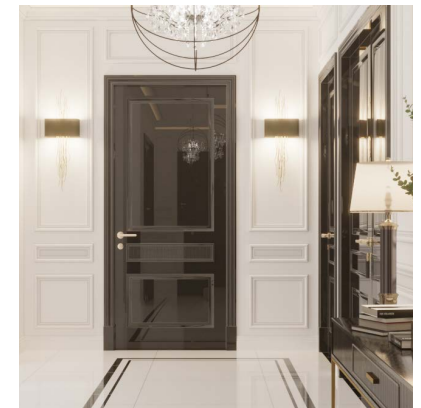
Textures are increasingly important in modern interiors and it is popular to use the veneer grain direction to add a subtle feeling of warmth and interest. The grain direction can be specified on bespoke doors to complement the design, whilst reconstituted veneers are available with the grain organised in a range of geometric patterns.



High gloss / sheen

Modern doors are often applied with a lacquer or sheen, which depending on the level provides a high gloss finish.

Modern settings with a simple colour palette can be finished with doors with a high sheen to add contrast and a feeling of luxury, for example, black against a white kitchen.



Trends in door handles and ironmongery

In many property developments and renovation projects, door handles and furniture are not given enough consideration at the design stage and left to the last minute. On average however, home owners engage with these design assets more than any other interior feature. Overlooking such a pivotal design choice can result in an undesirable finish which detracts from the overall contemporary feel.

Ideally you should consider the handle when ordering your doors since the door will dictate the ideal style and finish of the handle. Because a door and handle share the same immediate space, it's important to understand how they complement each other. Door handles that contrast against the door surface will stand out but will only look intentional if there is a high level of consistency with the surrounding area.

The style and finish should sit well within the colours and patterns of your door and colour scheme. Plus, the hardware needs to be fit for purpose, long lasting and suitable for carrying out an important everyday function.

There are lots of options when it comes to size, type and design for modern homes but contemporary styled handles and door knobs are usually sleek, simple and minimalist. Modern handles are usually straight or angular rather than curved and come with a round or square rose and no backplate.



Trending door handle designs for modern homes

ROUND

Handles on round rose with rounded features not only look good but perform ergonomically for owners. They suit the widest range of door designs, making them the default choice.



LR446-PC
Polished Chrome



LR440-PC
Polished Chrome

ANGULAR

Angled handles are often used to complement and accentuate sleek lines of contemporary architecture. Shaped levers add creative style and personality into otherwise functional items.



LR445-SC
Satin Chrome



LR483-MBZ
Matt Bronze

SQUARE

Handles on square rose, with square flat levers, complement modern doors with square panels, inlays or groove designs.



LR335-PC
Polished Chrome



LR393-BN
Burnt Nickel

DESIGNER

Fashion inspired, designer handles are heavy weight, giving a luxury tactile feel and available in non-standard finishes, adding to the individuality and luxury feel of high-end properties.



LR4032-SBN
Satin Burnt Nickel



LR482-PC
Polished Chrome

What are the popular handle finishes in modern homes?

Although chrome finishes remain universally popular, other finishes have started to trend as the importance of consistency comes to the fore. Because hinges and door handles operate together as a single unit, for consistency it's important to make sure the hardware, such as hinges and latch plates, is available in the same finish or at least a close match. Different metals offer diverse aesthetic benefits and qualities, and each metal type requires specific maintenance and care.

MATT BRONZE

Matt bronze accents in home interiors offer attractive warm tones which work with cosy furnishings. This finish exudes a certain quality exclusive to a selection of door handles in our Denpremo range.

POLISHED / SATIN NICKEL

Nickel is a great alternative to chrome with a shiny lustre and silver colour that still allows the surface of the door to take centre stage. Nickel is generally more expensive than chrome, but has a dimensional warm tone that is often preferred.

What are the Popular handle finishes in modern homes?

MATT BLACK

Door handles in a matt black finish offer a deluxe aesthetic in contemporary interiors. Matt black door handles have soared in popularity as homeowners and designers chose trendy black elements in their furniture, lighting fixtures and kitchen surfaces. A product with a matt finish will not show dirt, fingerprints, watermarks, and is easy to clean.



CHROME

Chrome door handles are the go-to option for many homeowners as the neutral tone exterior suits many modern interior styles. Chrome door handles on rose are particularly popular, due to their minimalist appearance on the surface of the door. Polished Chrome (PC) Satin Chrome (SC)

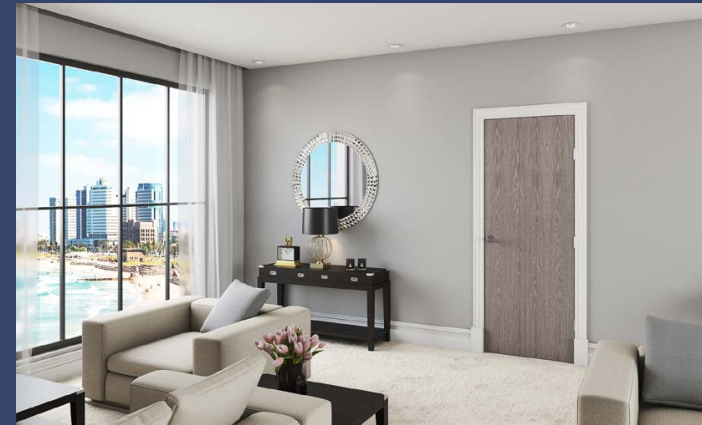


Summary

How will trends in modern design affect property developments in 2022?

It's clear that global events have had an effect on the design of homes and the choice of materials in contemporary residential settings. Fashions come and go but doors and handles have never been so important. In 2022 we will see:

- More consideration of door handles and ironmongery at the design stage
- Creative use of doors to maximise flexible space
- Selective choice of colours and finishes, especially natural colours
- Emphasis on door design to complement the interior
- Use of light through glazing options
- Use of custom options to add personality and character
- Greater use of quality / authentic materials
- Investment in doors and other fixtures to maximise space and value



For any designer or developer, having an experienced, capable door and ironmongery supplier is vital to realise their project's vision.

That's where Denleigh comes in.

Your one-stop source for designer doors and ironmongery

Denleigh is a unique dual supplier of bespoke internal doors and ironmongery for up-market design-led residential developments. Leveraging decades of carpentry and architectural ironmongery experience, we help clients add value to their properties through beautifully designed doors, handles and hardware that complement and enhance their settings perfectly.

Your project could benefit from:

- The largest range of bespoke doors on the market
- Dual supply of doors, handles and ironmongery
- Innovative products exclusive to Denleigh
- PAS24 internal and external entrance doors
- Five ranges according to your project budget
- Doorsets and frames
- Full project management

Friendly professional advice

Talk to us today and find out how we can support your next project.

**Call Mark on 07385 959 842
or email mark@denleigh.co.uk**



Take our product selector challenge!

Find out what products are best suited to your project using our online tool. It only takes 2 minutes to complete and you will be instantly sent recommendations based on your preferences.

Launch





6 Solar Way
Solstice Park
Amesbury, Wiltshire
SP4 7SZ

T: 01722 337060

mail@denleigh.co.uk

www.denleigh.co.uk

